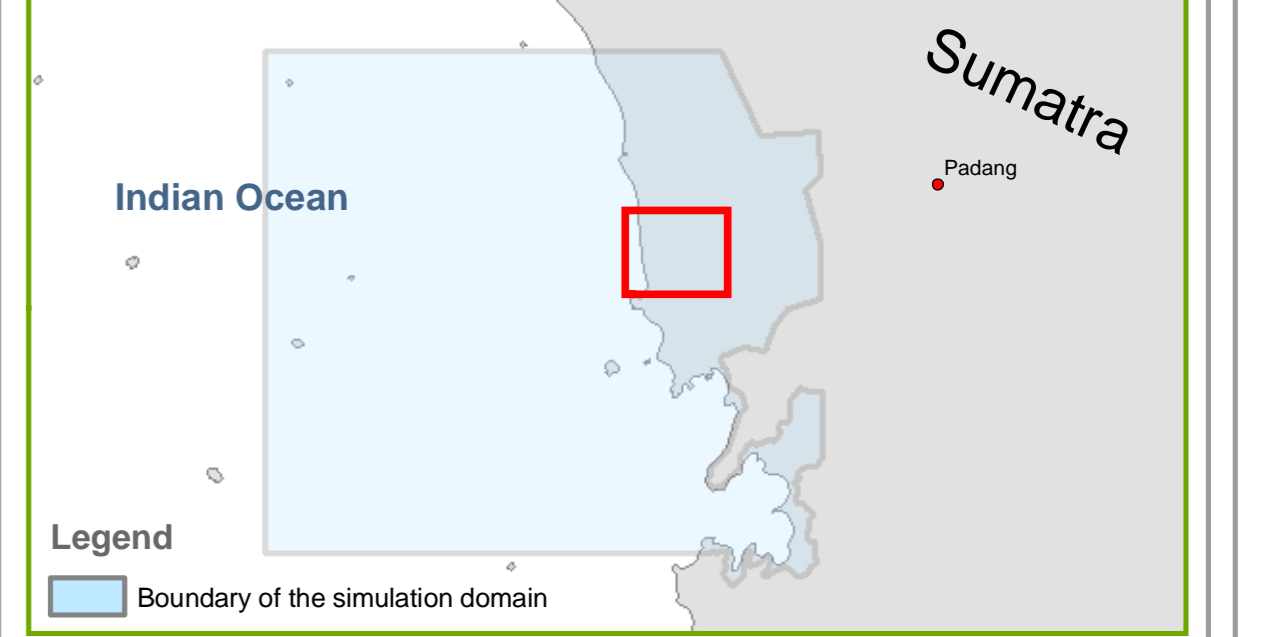
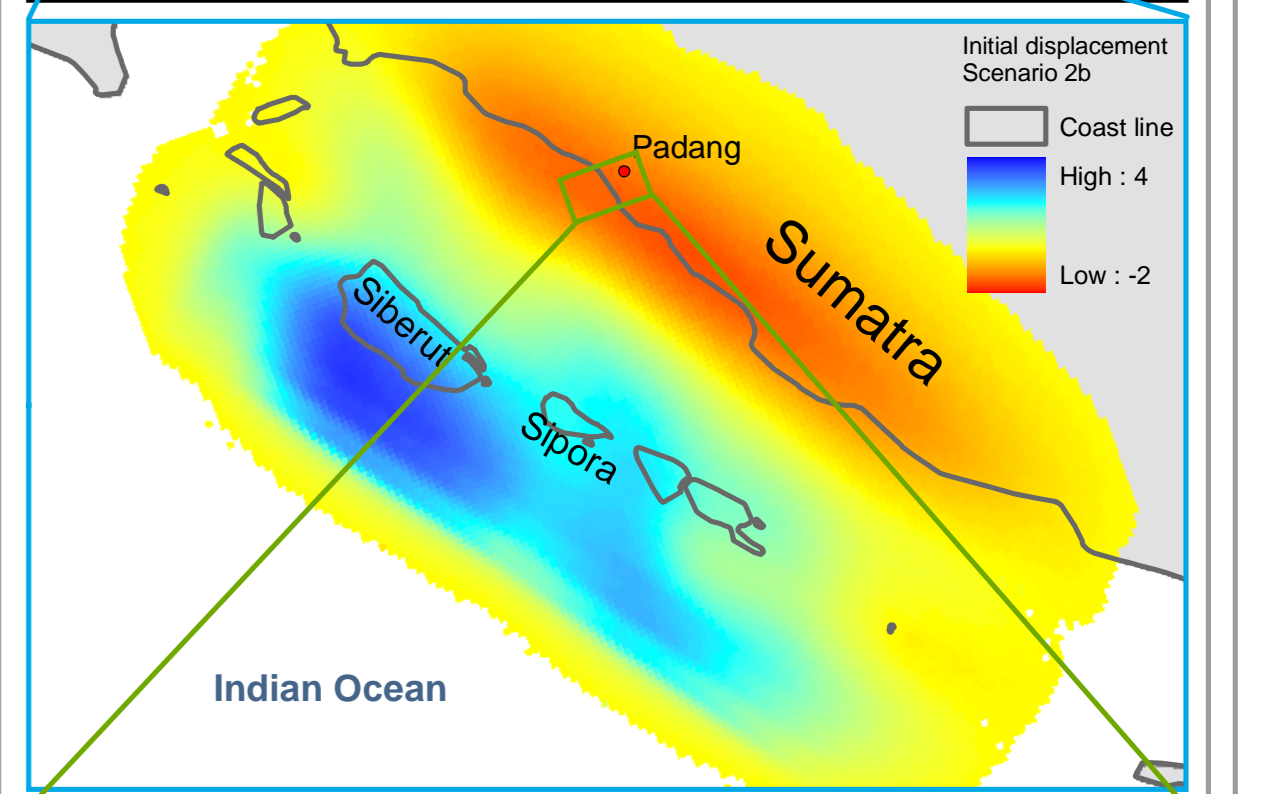
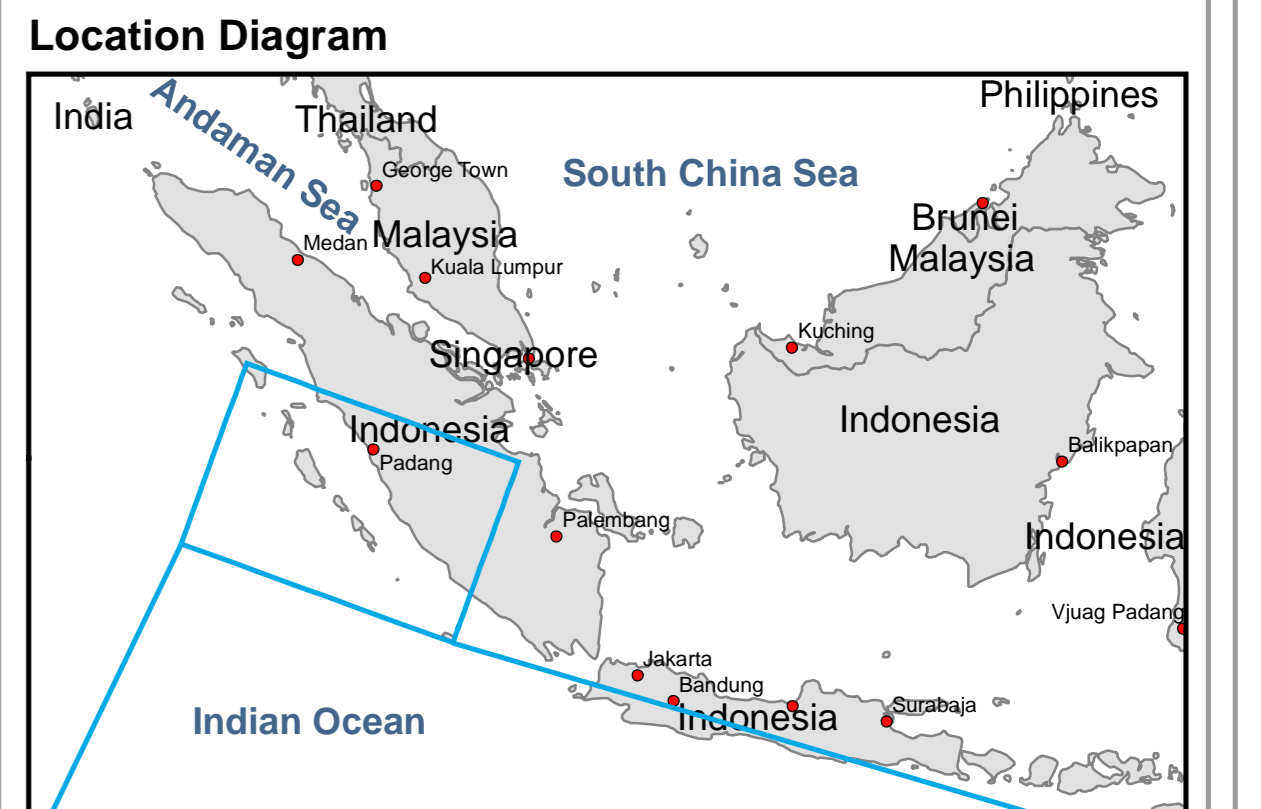




Map Reference ID: Series A: Water depth - Tile #3
Padang - Indonesia
 Scale 1:5000
 Hazard and Inundation mapping - "Last-Mile - Evacuation project"



Legend

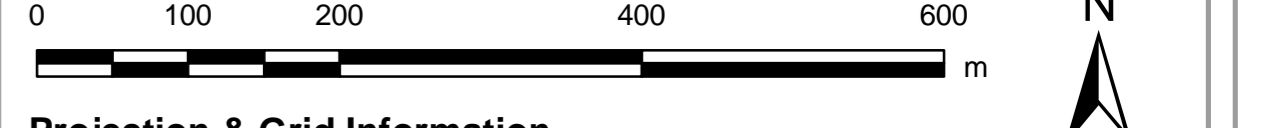
Ikonos / Aerial Images	Scenario 2b, tide, DSM	Background image RGB band	Points of interest
0,10 m - 01,00 m	Red: Band 1	Church	Hospital
01,01 m - 02,00 m	Green: Band 2	Hotel	Market places
02,01 m - 03,00 m	Blue: Band 3	Mosques	Post office
03,01 m - 04,00 m		School / Univ	
04,01 m - 05,00 m	Infrastructure		
05,01 m - 06,00 m	Streets		
06,01 m - 07,00 m	Footprints of buildings		
07,01 m - 08,00 m			
08,01 m - 09,00 m	Hydro-numerical simulation		
	Boundary of the simulation domain		

Map information and interpretation

The city of Padang is located at the western coast of Sumatra that is threatened severely by potential tsunamis triggered by earthquakes along the Sunda arch. To date, inundation and hazard information is limited to coarse data basis. New modeling results are mapped here. Along with enhanced datasets of elevation and bathymetry (RSS GmbH, Franzius-Institute and German Aerospace Center DLR), a possible future rupture scenario has been applied and calculated by means of hydro-numerical modeling tools.

In result, a refined hazard map is proposed. It bases on the following assumptions: The initial seafloor displacement is exaggerated by a safety factor of 1.50. The initial water level at the Padang coast is fixed at an estimated high water level of 0.80m above MSL. Subsideance due to the rupture is approximately -1.38m at Padang. Earthquake related information is provided in collaboration with Agency for the assessment and application of technology (BPPT), Indonesian Institute of Science (LIPI) and Earth Observatory of Singapore (EOS). The topography includes surfaces of houses derived from an up-to-date aerial survey, where vegetation effects have been removed thoroughly. Displayed hazard is either quantified by means of the hydro-dynamical quantity of water depth or specific energy head (Map series A: water depth, Map Series B: Specific energy head). Numerical model used: ANUGATUNAMI. Further reference and citations therein:

Bornero, J. C., K. Sliet, M. Chlieh, and C. E. Synolakis (2006): "Tsunami inundation modeling for western Sumatra, PHAS, 103(5), doi:10.1073/PNAS.0604091103".
 Sliet, K., et al. (2008): "Earthquake supercycle inferred from sea-level changes recorded in the corals of West Sumatra, Science, 322, 1674-1876".
 Tschierke, H., Gieseberg, N., Setai, N., Lämmel, G., Moder, F., Oczapka, M., Klüpfel, H., Wahi, R., Schumann, T., Strunz, G., Birkmann, J., Nagel, K., Sieget, F., Lehmann, F., Diech, S., Gress, A., Klein, R.: "Last-Mile preparation to a potential disaster - Interdisciplinary approach towards tsunami early warning and an evacuation information system for the coastal city of Padang, Indonesia. In: NHSS 9 (2009), Aug., No. 4, 1509-1528".



Projection & Grid Information

Reference Grid	Geographic Grid
UTM Zone 47 South	Geographic (DMS)
Spheroid: WGS84	Geographic (DMS)
Datum: WGS84	WGS84

Satellite Information and Aerial Image

Satellite: Ikonos	Company: RSS GmbH, DLR
Pixel Size: 1m	Pixel Size: 0.25m
Acquisition Date: April 12, 2005	Acquisition Date: September, 2007
Georeferencing: Orthorectification	Georeferencing: GPS
Accuracy: +/- 5 m RMSE	Accuracy: +/-0.30m

Credits & Copyright

- Aerial Image Padang © RSS GmbH 2008
- Image Bunguis © Google Earth 2008
- KONOS © GEOS 2005
- Vector Data © DLR 2009, RSS GmbH 2008
- Bathymetry / Hydro-numerical data © Franzius-Institute, LUH 2010

Date: 2010-04-02
Edition: 1.1
 Print dimension at 1:5,000 ISO A0 size (1189 x 841 mm)

Franzius-Institute "Last-Mile - Evacuation" has attempted to provide mapping that is as accurate as is available with the source material/hydro-numerical simulation, however all geographic or content information has limitations due to scale, resolution, date and interpretation of the source materials. Accordingly, these maps are distributed as is, without any warranty, either expressed or implied, including but not limited to warranties of suitability to a particular purpose or use. The entire risk as to the results of the use of these data is assumed by the user and the supplier accepts no liability for any loss, damage or inconvenience caused as a result of reliance on the mapping.

Map generation
 FRANZIUS-INSTITUT
 for Hydraulic, Waterways
 and Coastal Engineering

Data provision
 GITEWS
 GEOTECHNOLOGIEN

Acknowledgement
 GITEWS
 GEOTECHNOLOGIEN