



36TH INTERNATIONAL CONFERENCE ON COASTAL ENGINEERING 2018

Baltimore, Maryland | July 30 – August 3, 2018

The State of the Art and Science of Coastal Engineering

Eco-System Based Beach Erosion Control By Berm Nourishment Combined With Buried Sand Tube

Shinji Sato, Professor, D.E.

Civil Engineering Department, The University of Tokyo

Yuuichi Okamura

*Miyazaki Office of River & National Highway,
The Ministry of Land, Infrastructure & Transport*

Keisuke Murakami, Professor Ph.D.

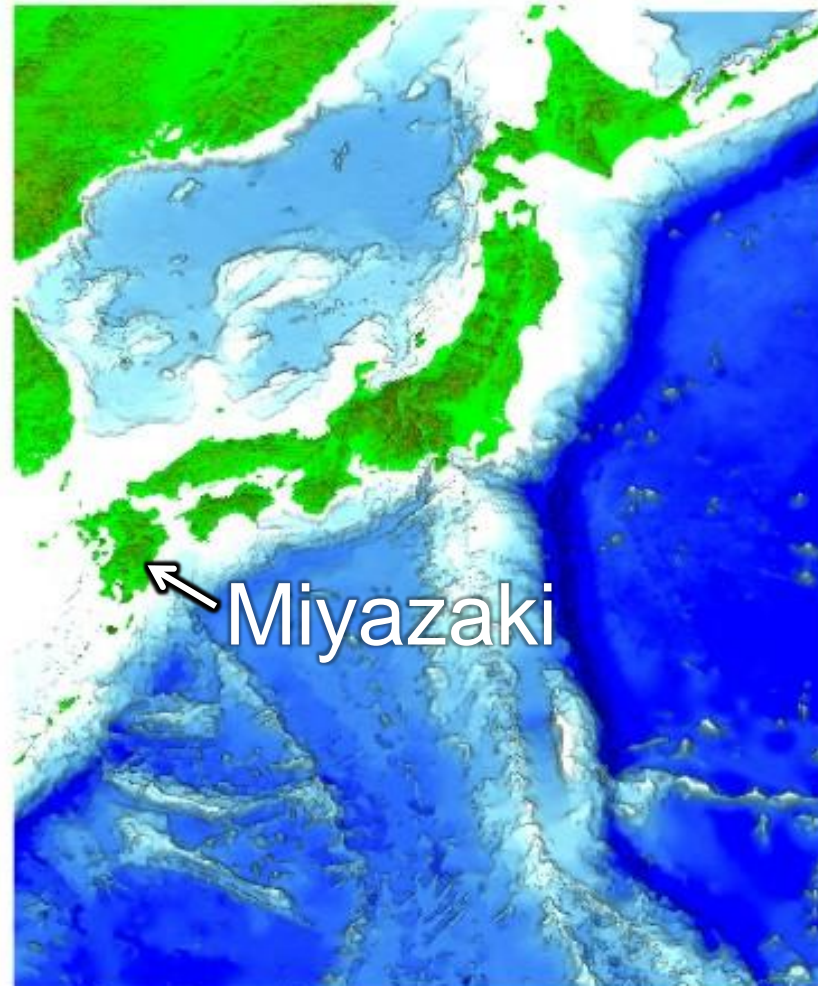
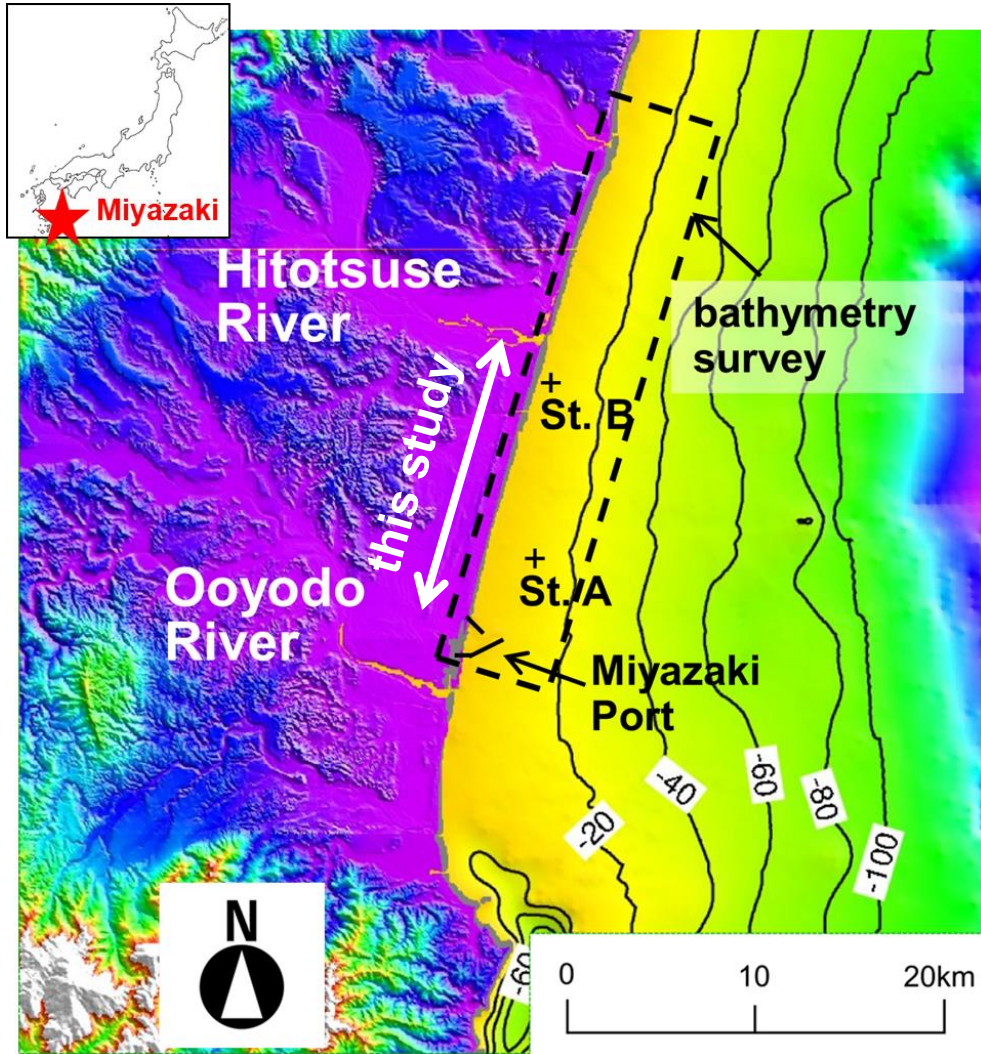
Civil Engineering Department, Miyazaki University

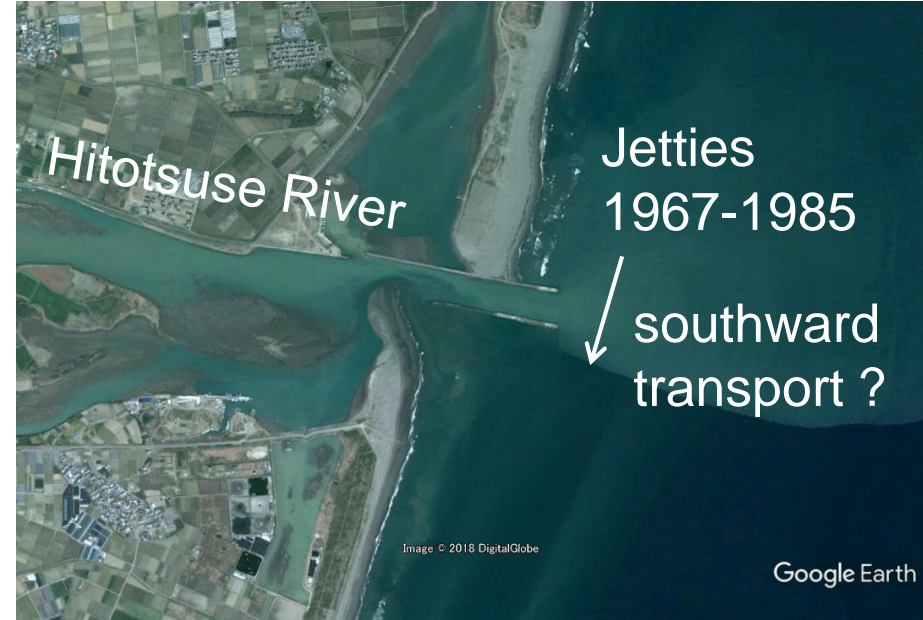
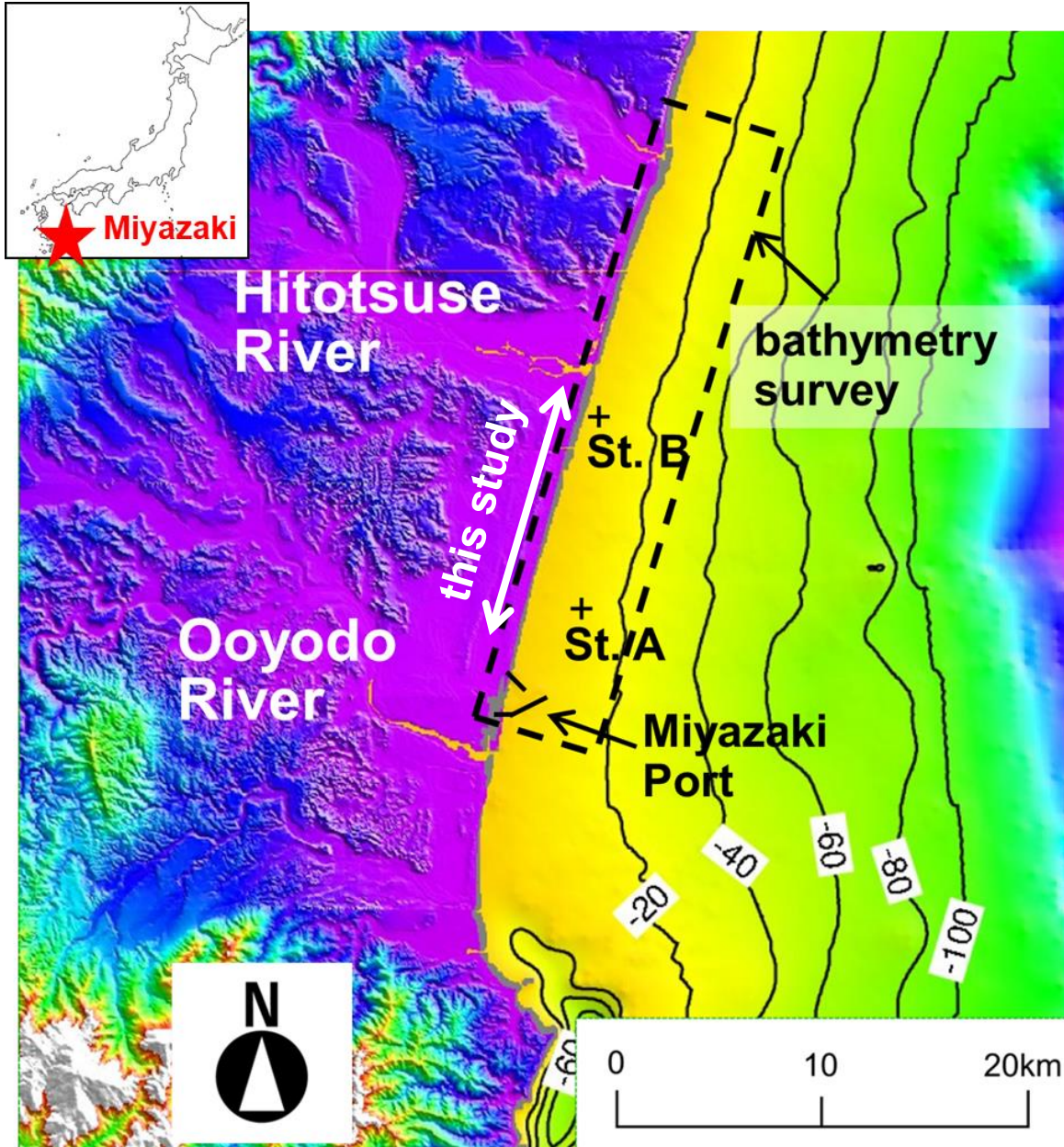
Shin Hashimoto, D.E.

Engineer, Token Consultant, Co. Ltd.

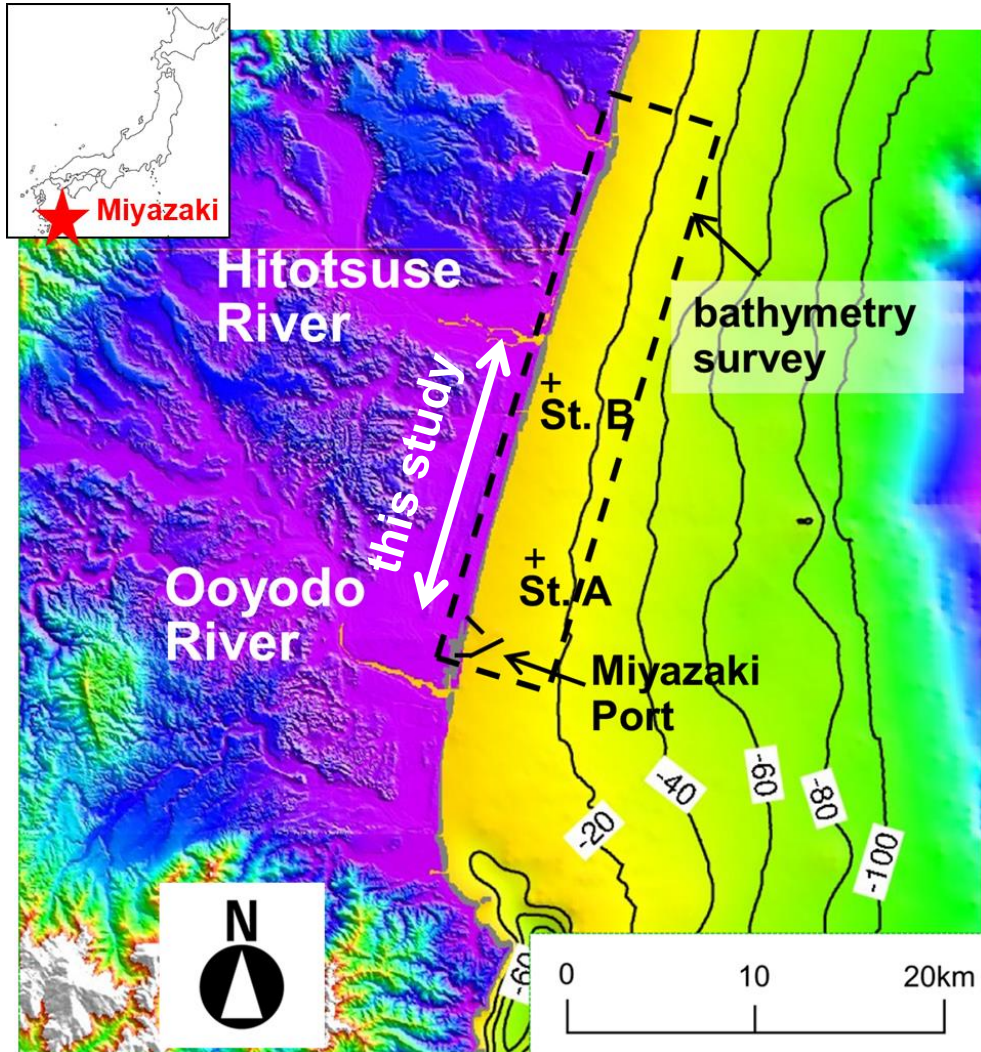


- ✓ 20km beach
- ✓ Ooyodo River and Hitotsuse River
- ✓ severe erosion since 1985





✓ structures alone cannot mitigate erosion



Sumiyoshi



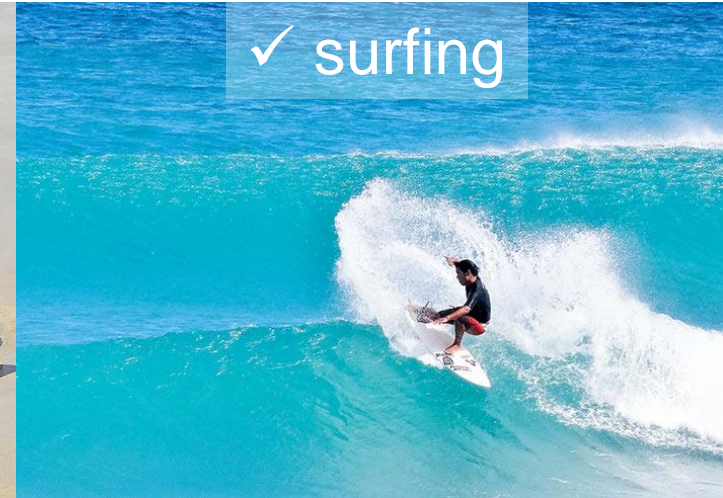
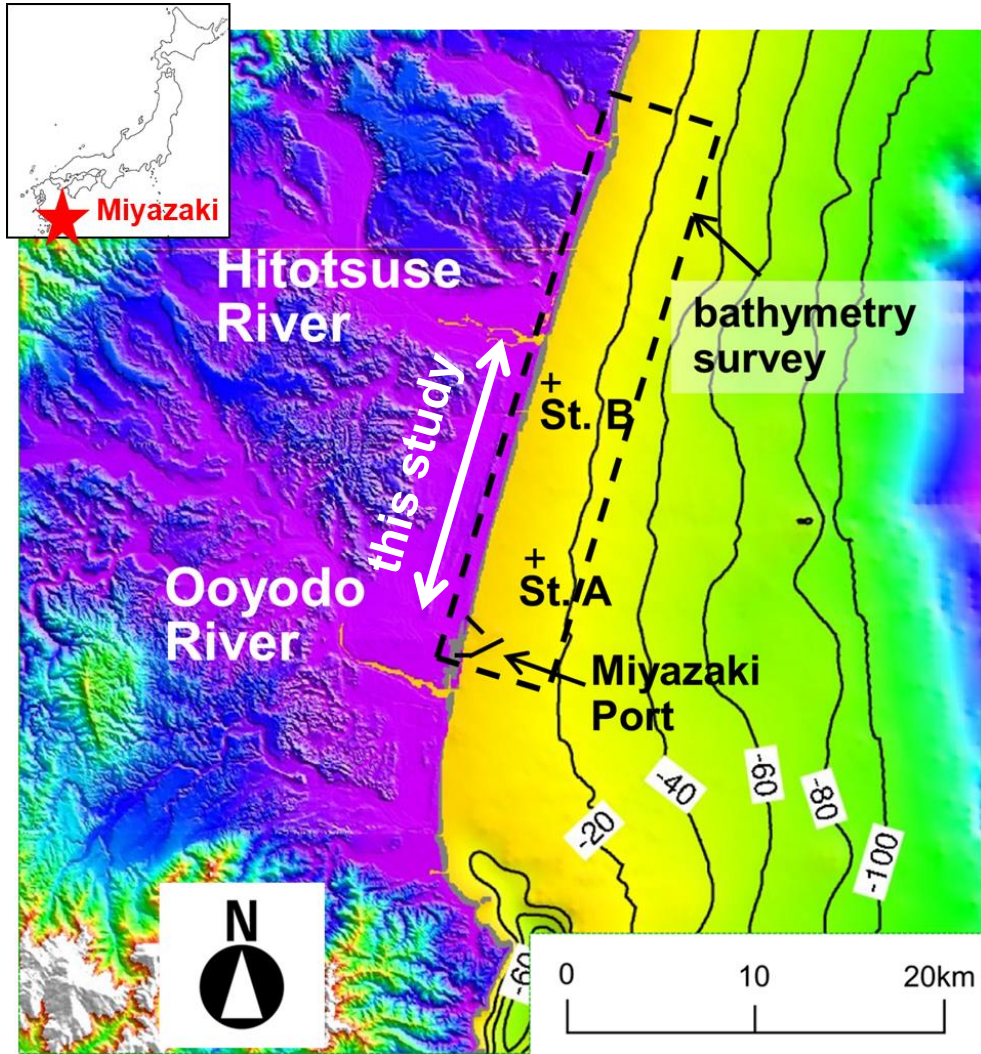
Aoshima



Akae



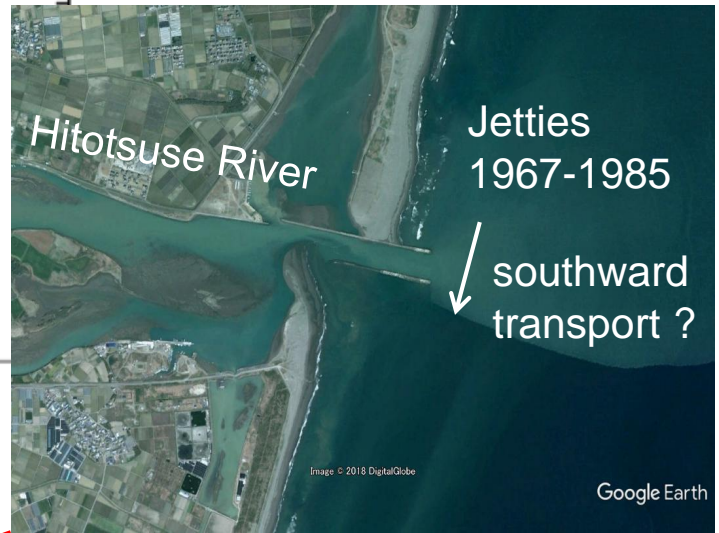
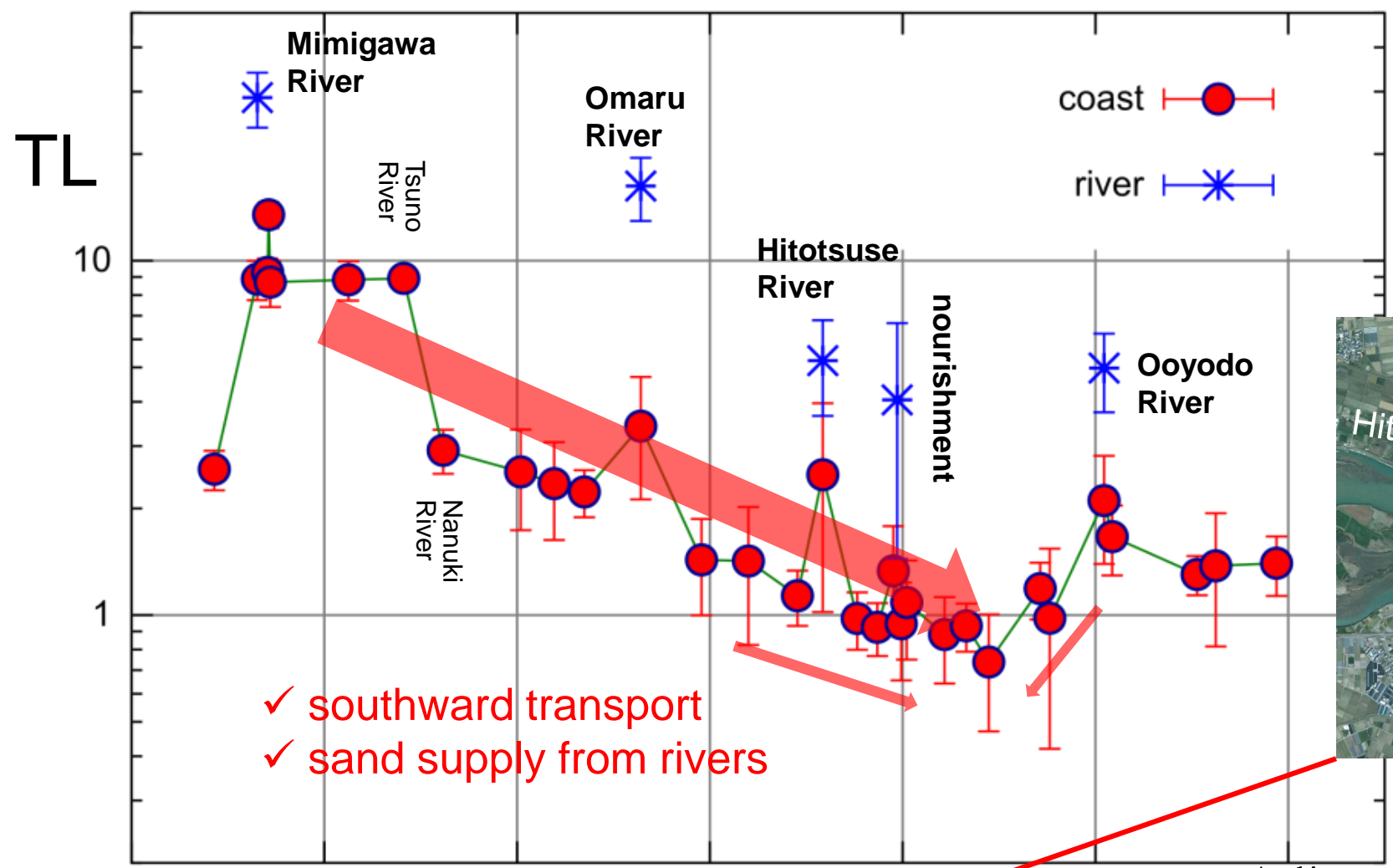
Coastal Erosion at Miyazaki Coast



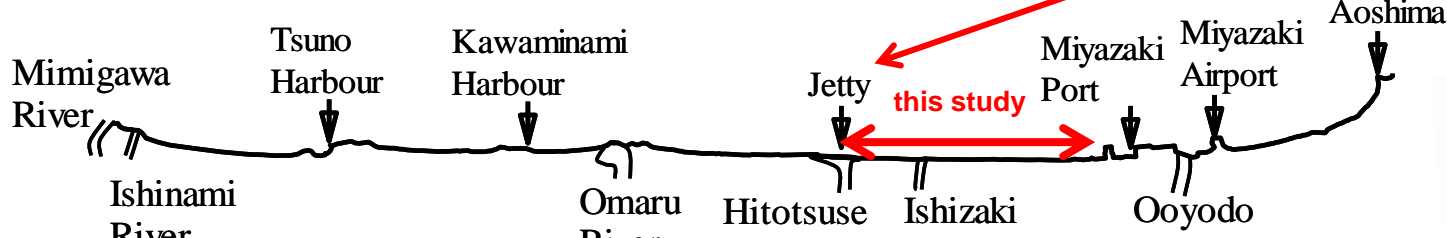
No more concrete!

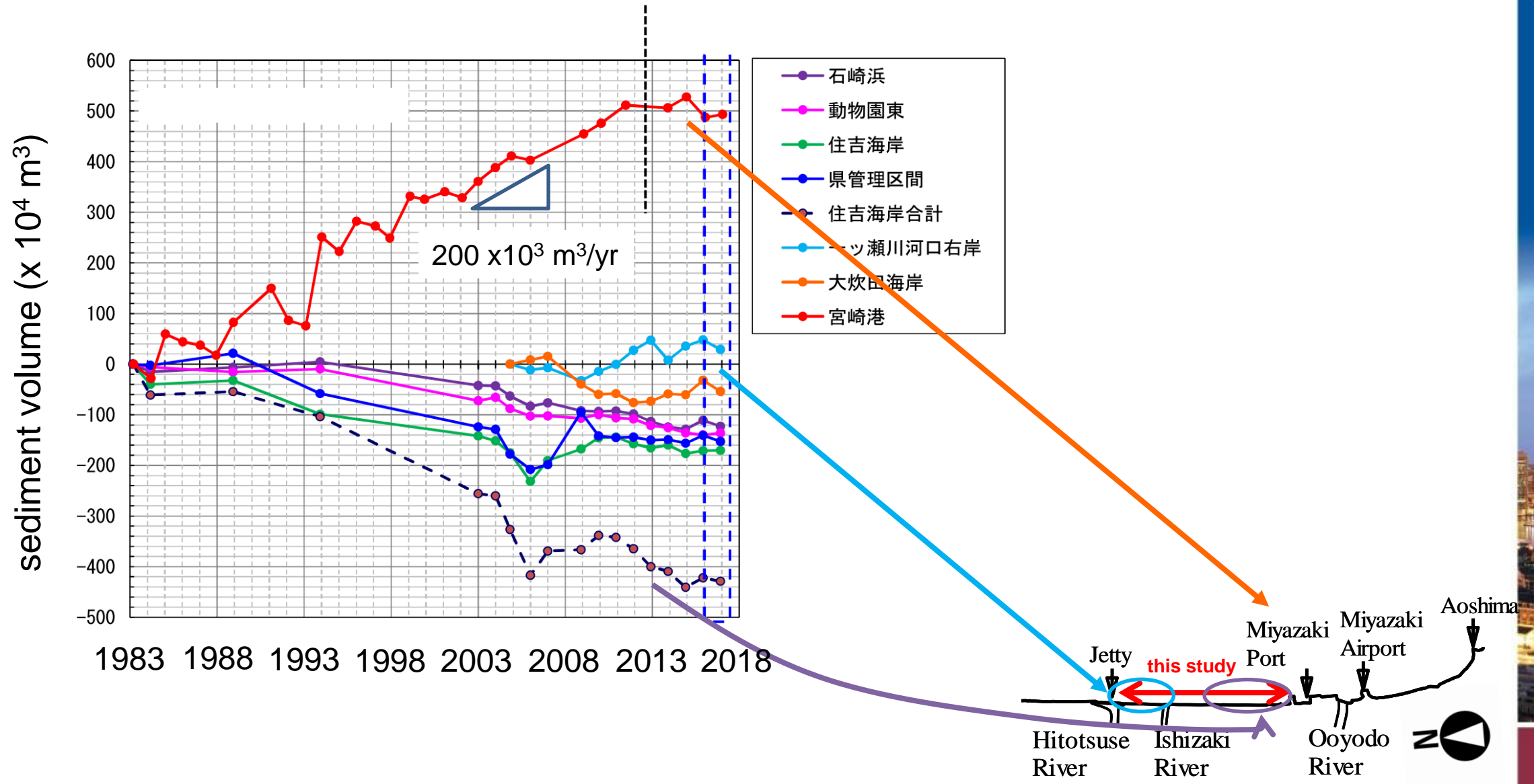


TL intensities of Feldspar particles (Sato et al., ICCE 2010)

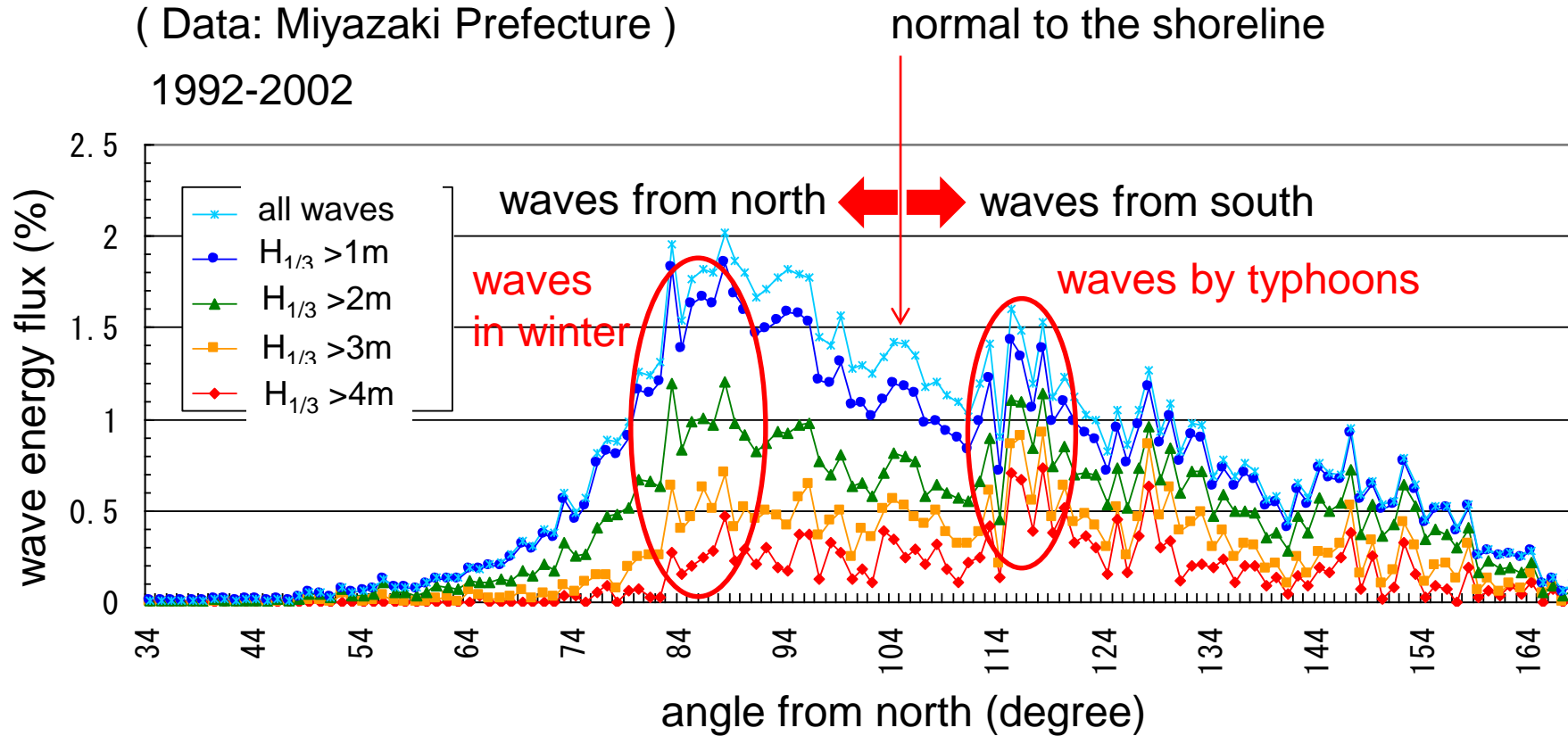


✓ southward transport
 ✓ sand supply from rivers





(Data: Miyazaki Prefecture)
1992-2002

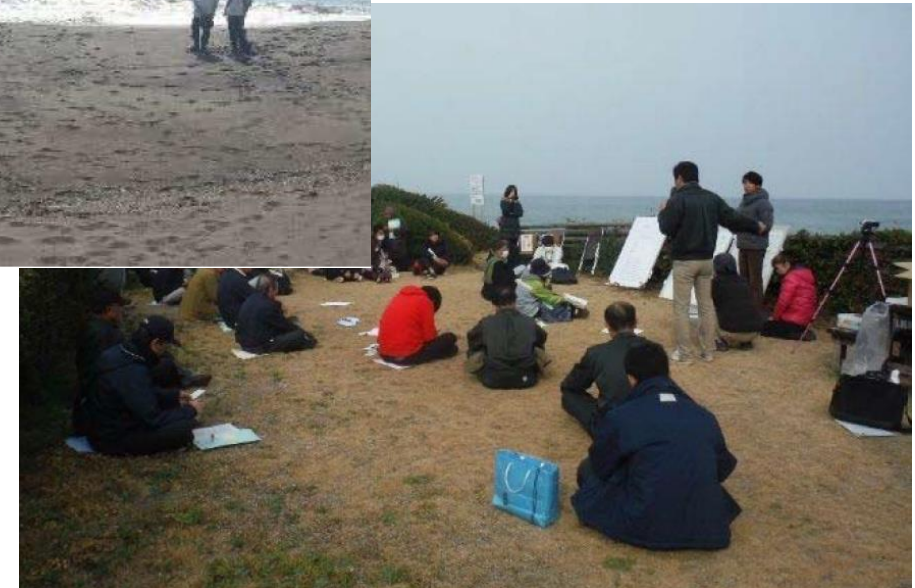


✓ contribution by typhoons ?



Consensus building

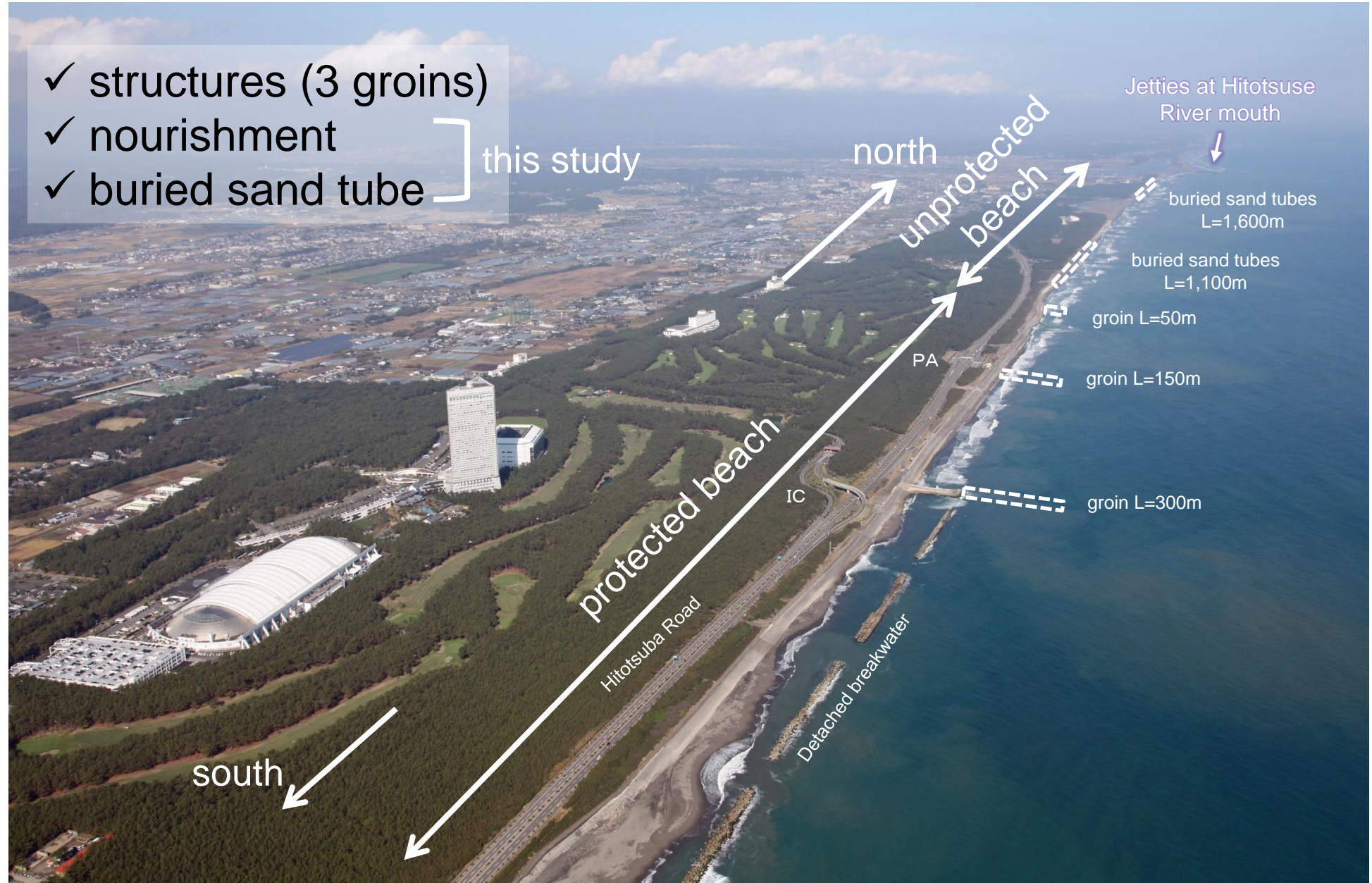
9/24



Erosion control plan (2011)

- ✓ structures (3 groins)
- ✓ nourishment
- ✓ buried sand tube

this study



Erosion on unprotected beach

Oct 11, 2014



Oct 13, 2014

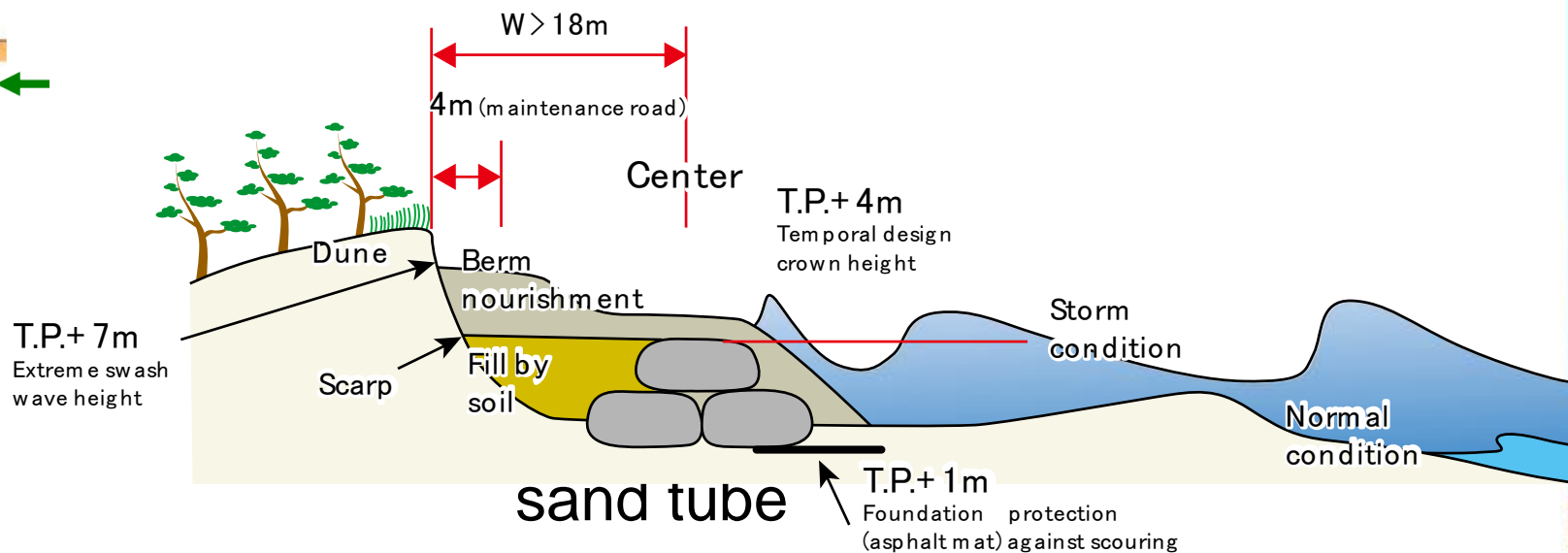
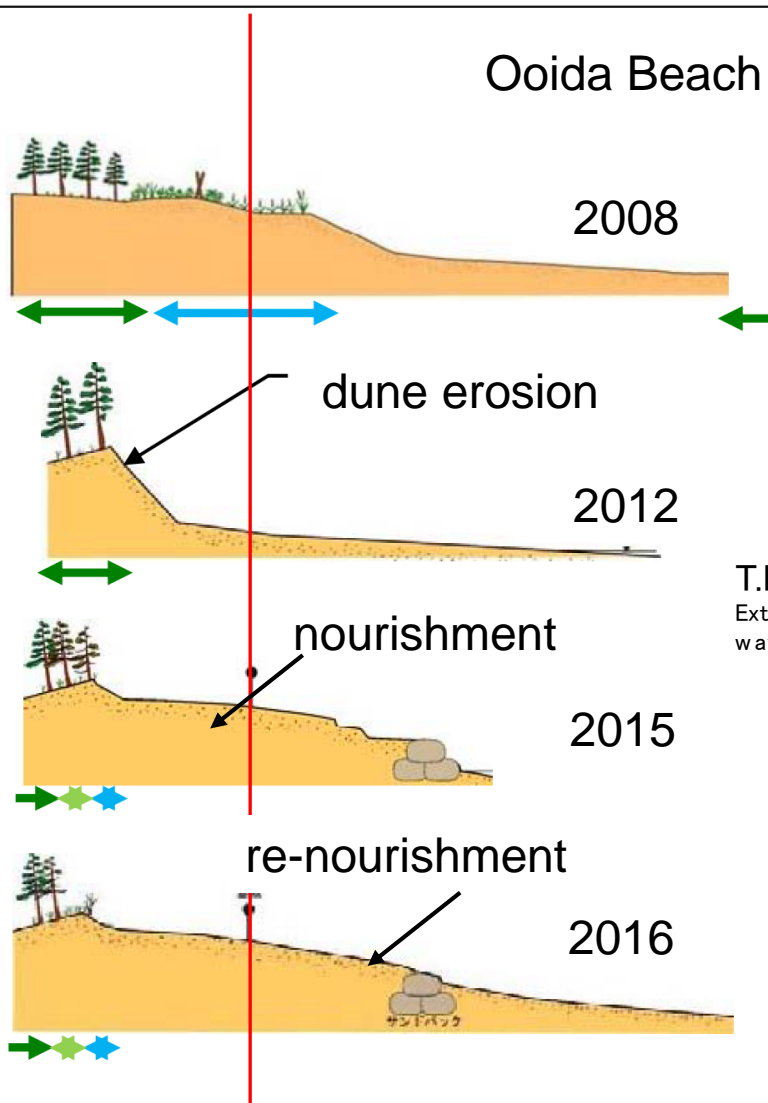


Impact of typhoon waves on long-term erosion ?

12/24



Buried sand tubes (2013-)



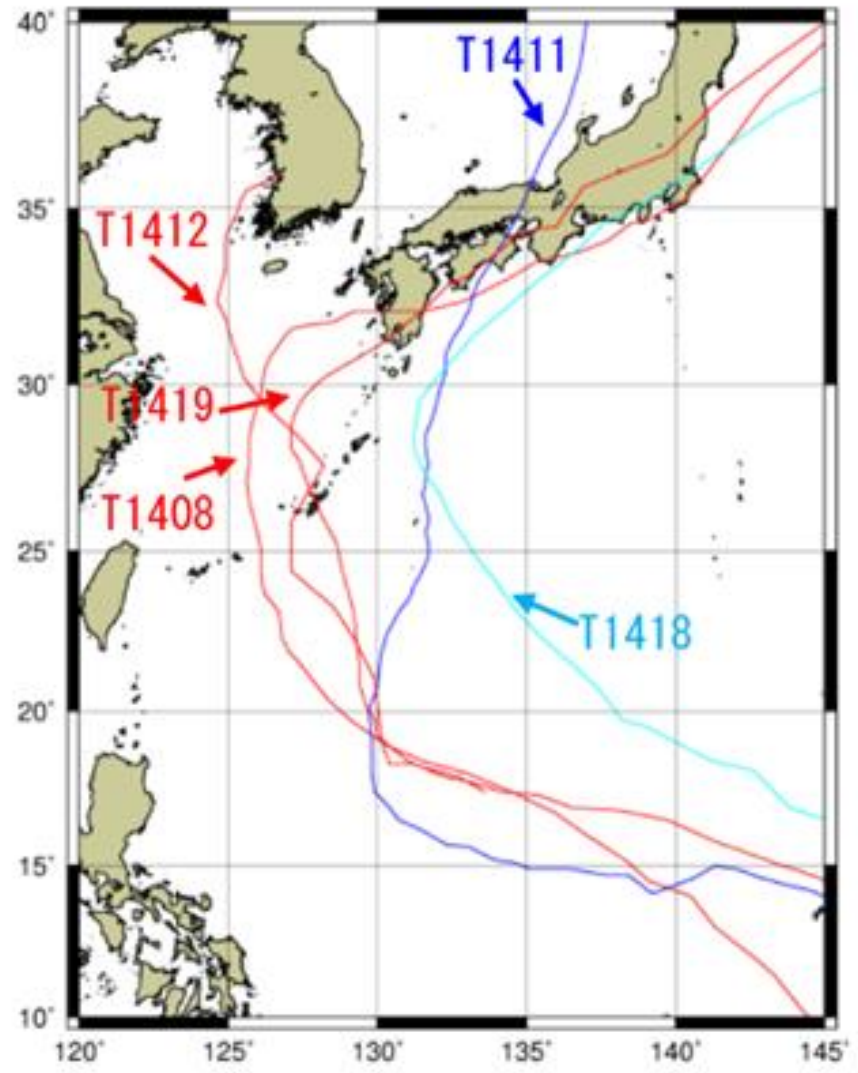


Sand tubes buried by nourishment

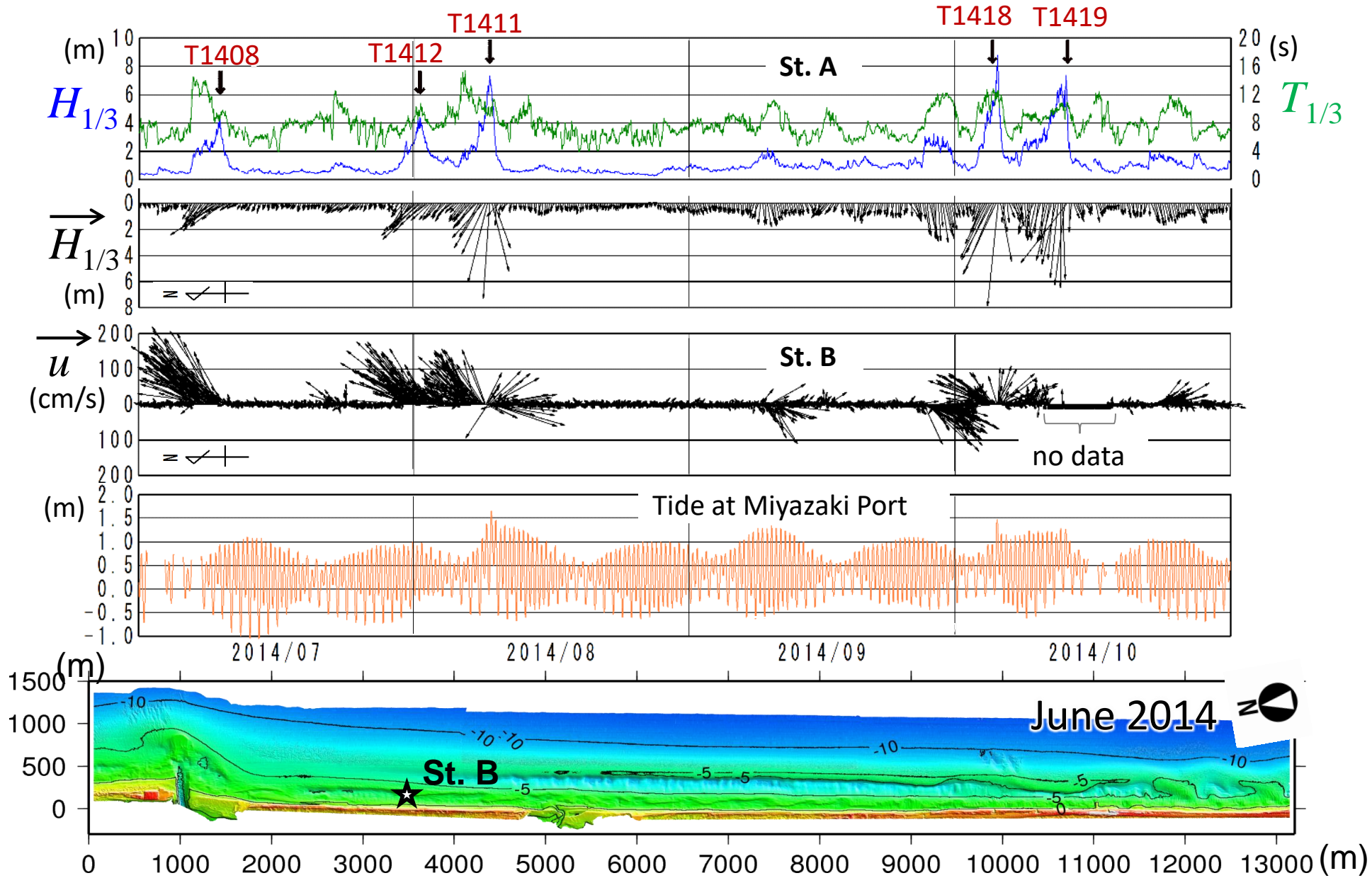
15/24



Five typhoons affected Miyazaki in July-October 2014



Northward currents generated by typhoon storms



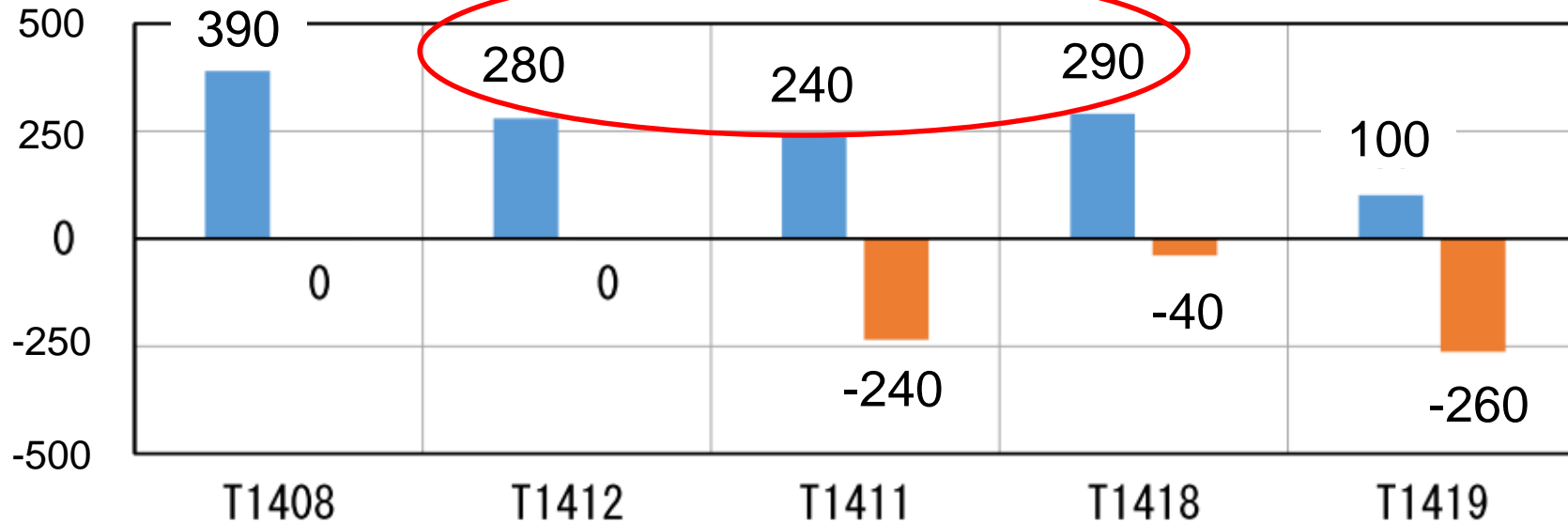
Kraus et al. (1982, ICCE)

$$Q = \frac{3.8 \times 10^4}{\gamma \tan \beta} H_b^2 \cdot V$$

as large as long-term annual southward transport $\sim -200 \times 10^3 \text{ m}^3$

Sand volume
($\times 10^3 \text{ m}^3$)

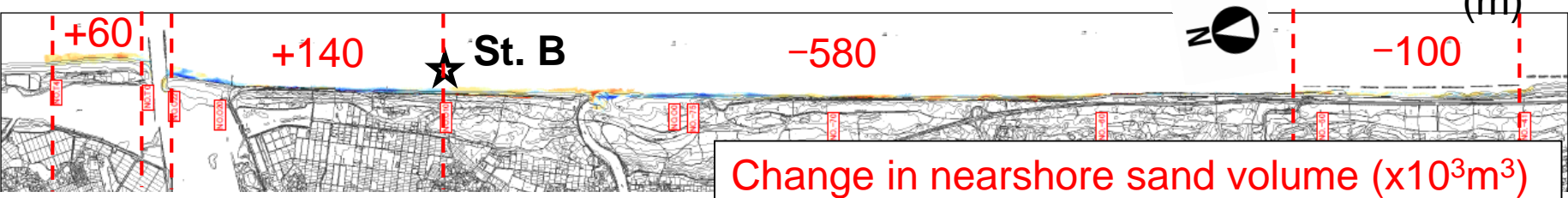
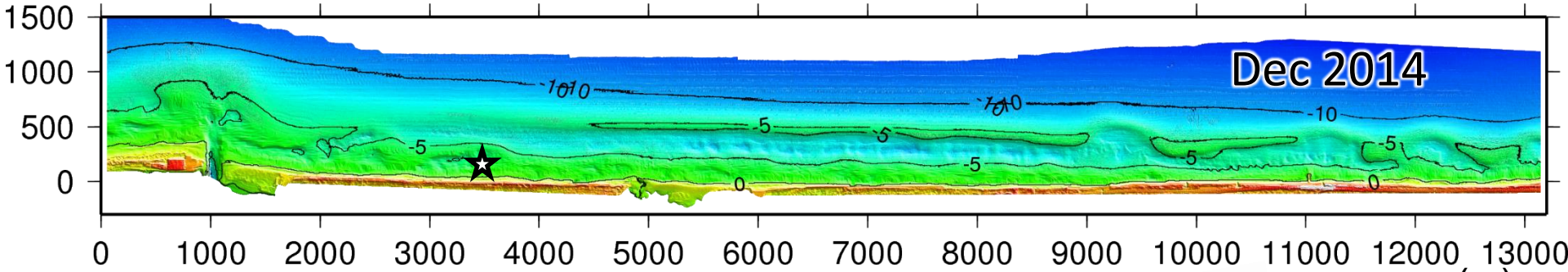
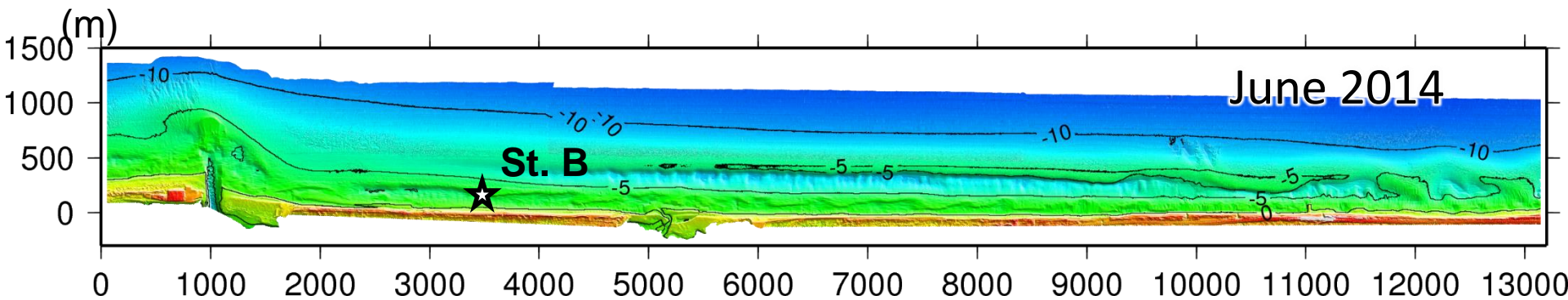
north
↑
↓
south



Northward sand transport by five typhoons
 $\sim 760 \times 10^3 \text{ m}^3$



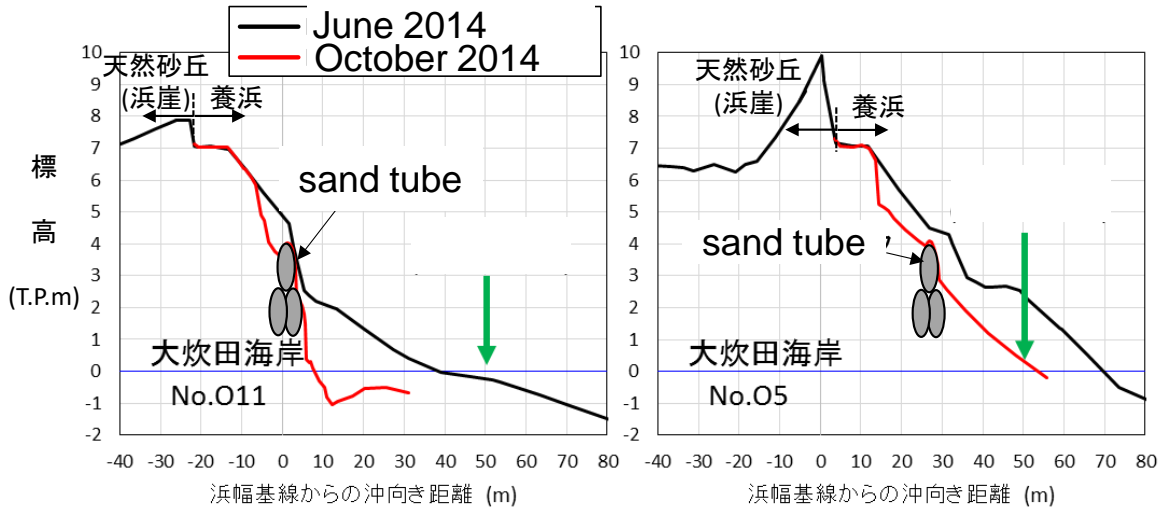
Northward sand transport $>10^5\text{m}^3$ by five typhoons



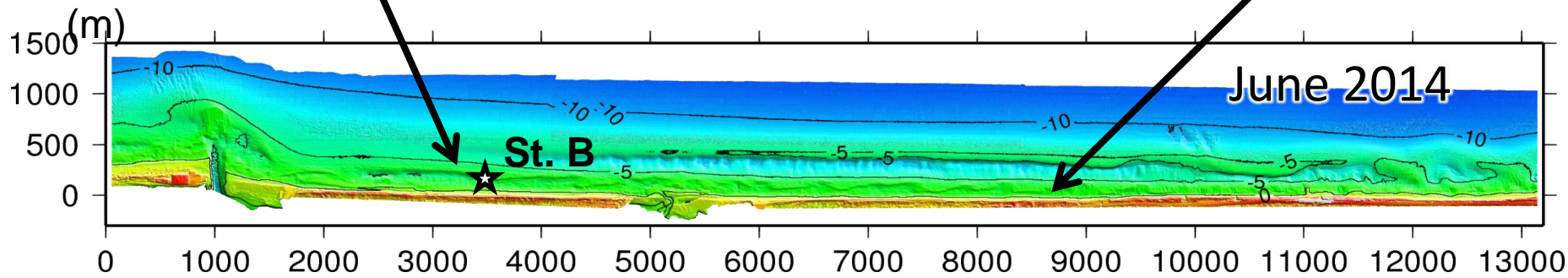
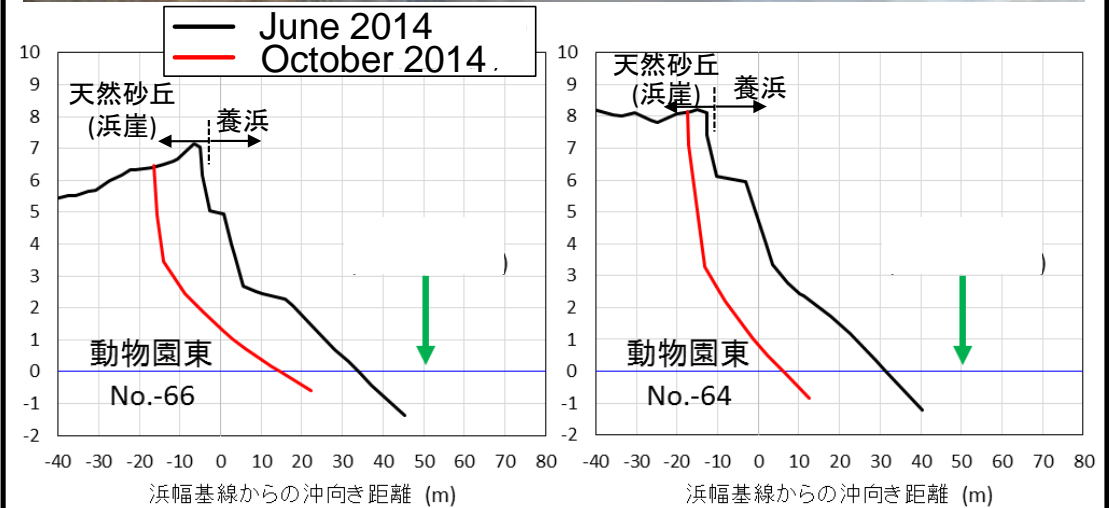
Hitotsuse
River



Nourishment + Buried sand tube



Nourishment only



Buried sand tubes exposed by typhoon storms



Buried sand tubes exposed by typhoon storms

Oct 11, 2014



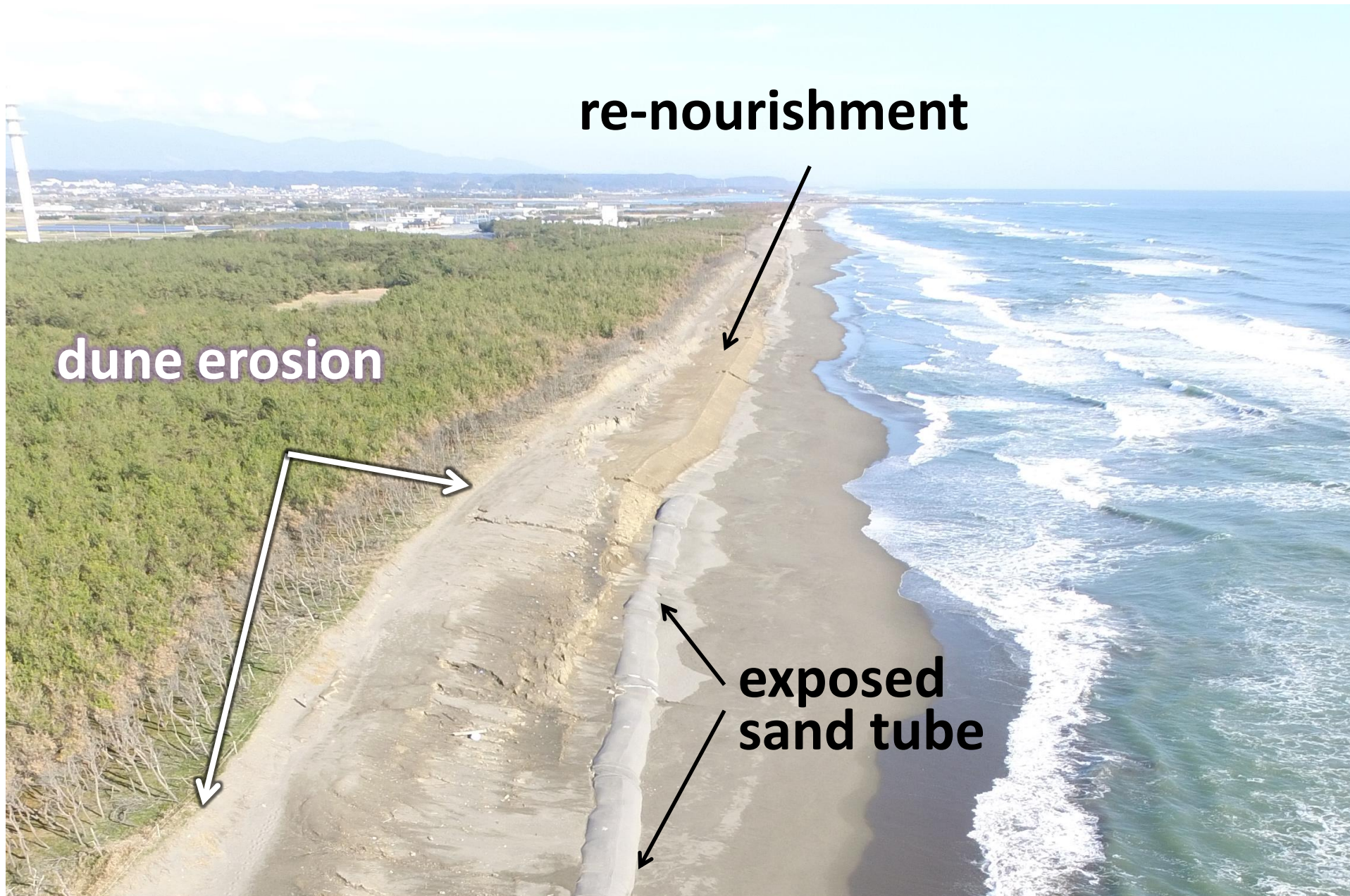
Oct 13, 2014



Sea turtle laying eggs on nourished berm

23/24





Eco-System Based Beach Erosion Control By Berm Nourishment Combined With Buried Sand Tube

1. The northward longshore sand transport due to a single typhoon storm was found to be as large as the annual southward longshore sand transport, thus causing rapid dune erosion.
2. Eco-system based control works, berm nourishment with buried sand tubes, appeared effective to mitigate dune erosion with minimum impact on eco-systems.

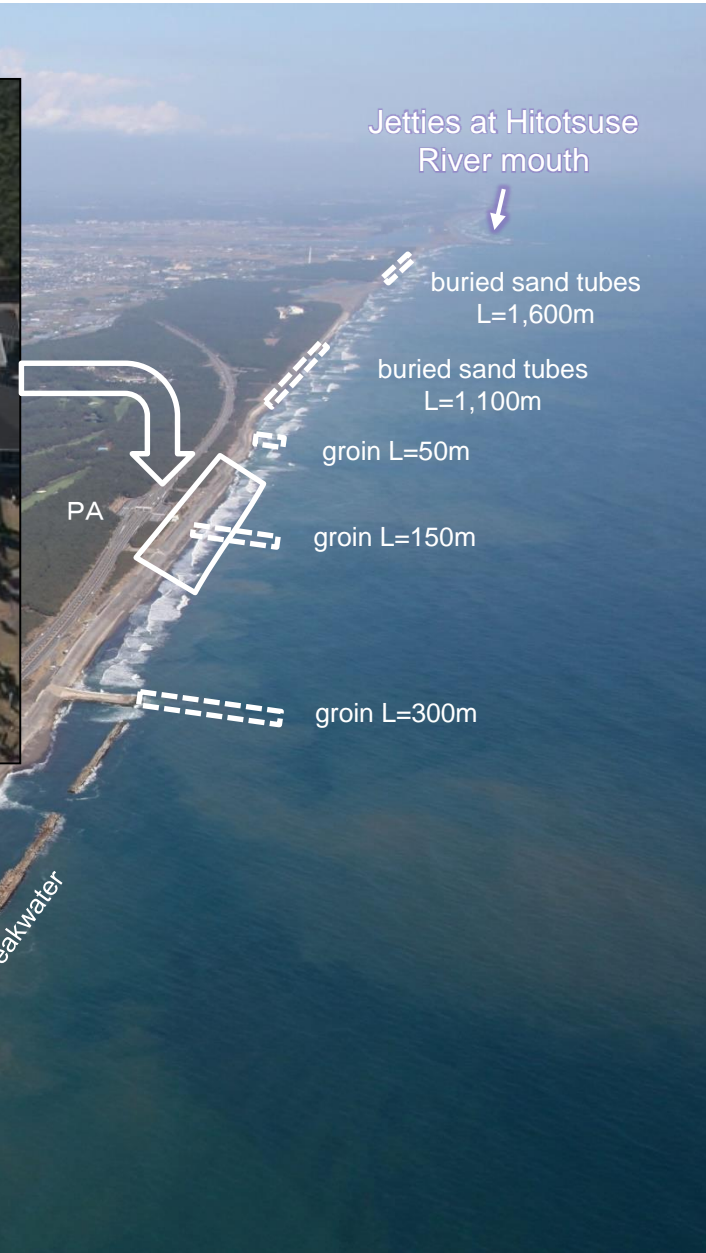
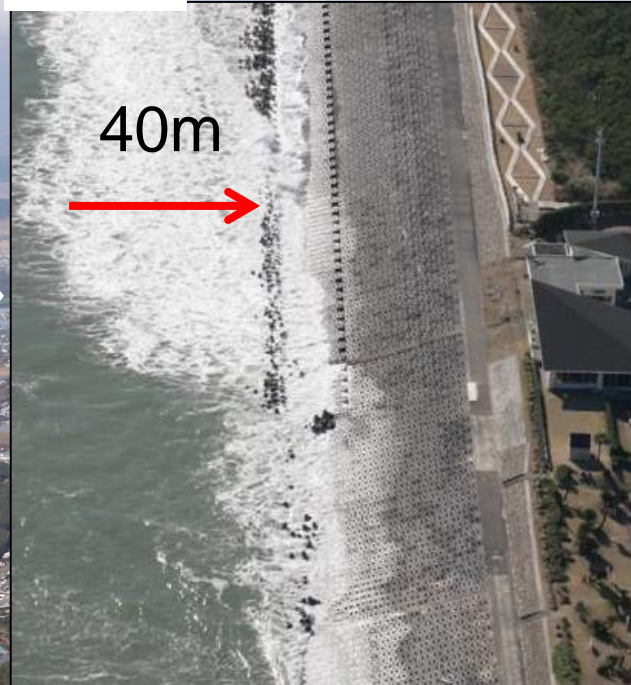




1985



2008

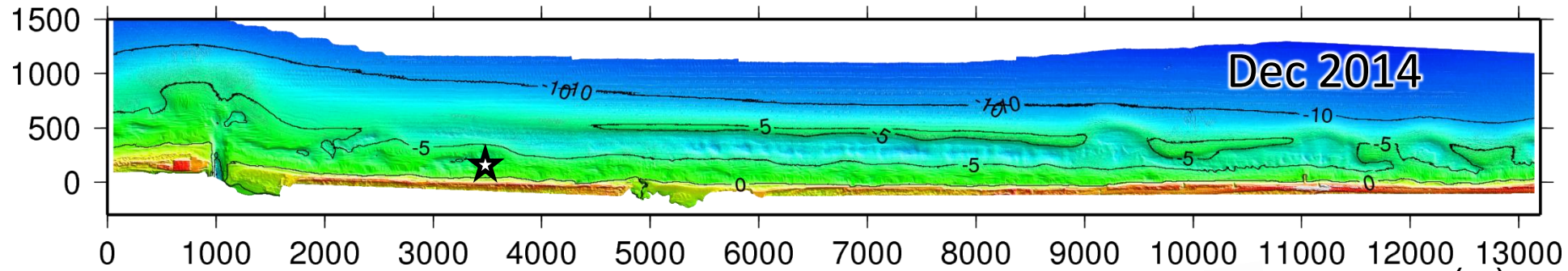
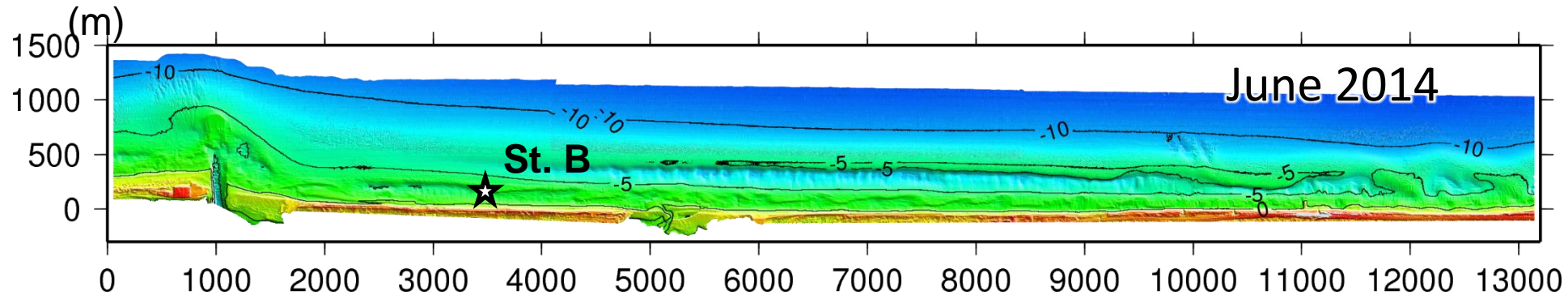
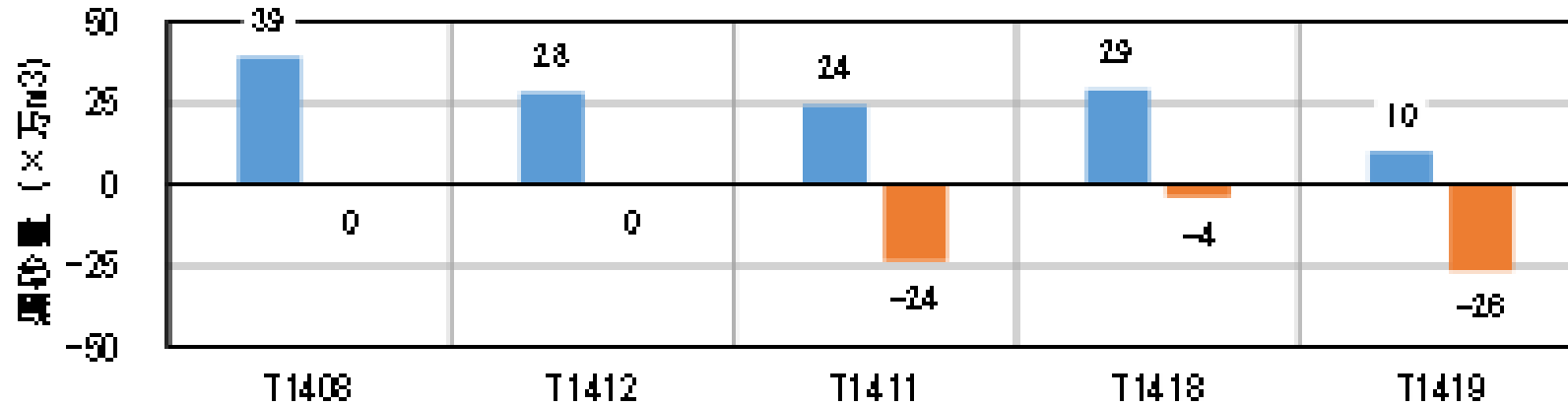


1km

漂砂量 (クラウスの式)

■ 北方向

■ 南方向







**36TH INTERNATIONAL CONFERENCE
ON COASTAL ENGINEERING 2018**
Baltimore, Maryland | July 30 – August 3, 2018